

GUIDELINES FOR:

REPORTING A CHILD SAFEGUARDING CONCERN

Arigatou International has a zero-tolerance policy regarding child abuse, mistreatment, or lack of care that results in actual or potential harm to the child's dignity, or wellbeing in the context of a relationship of responsibility, trust, or power.

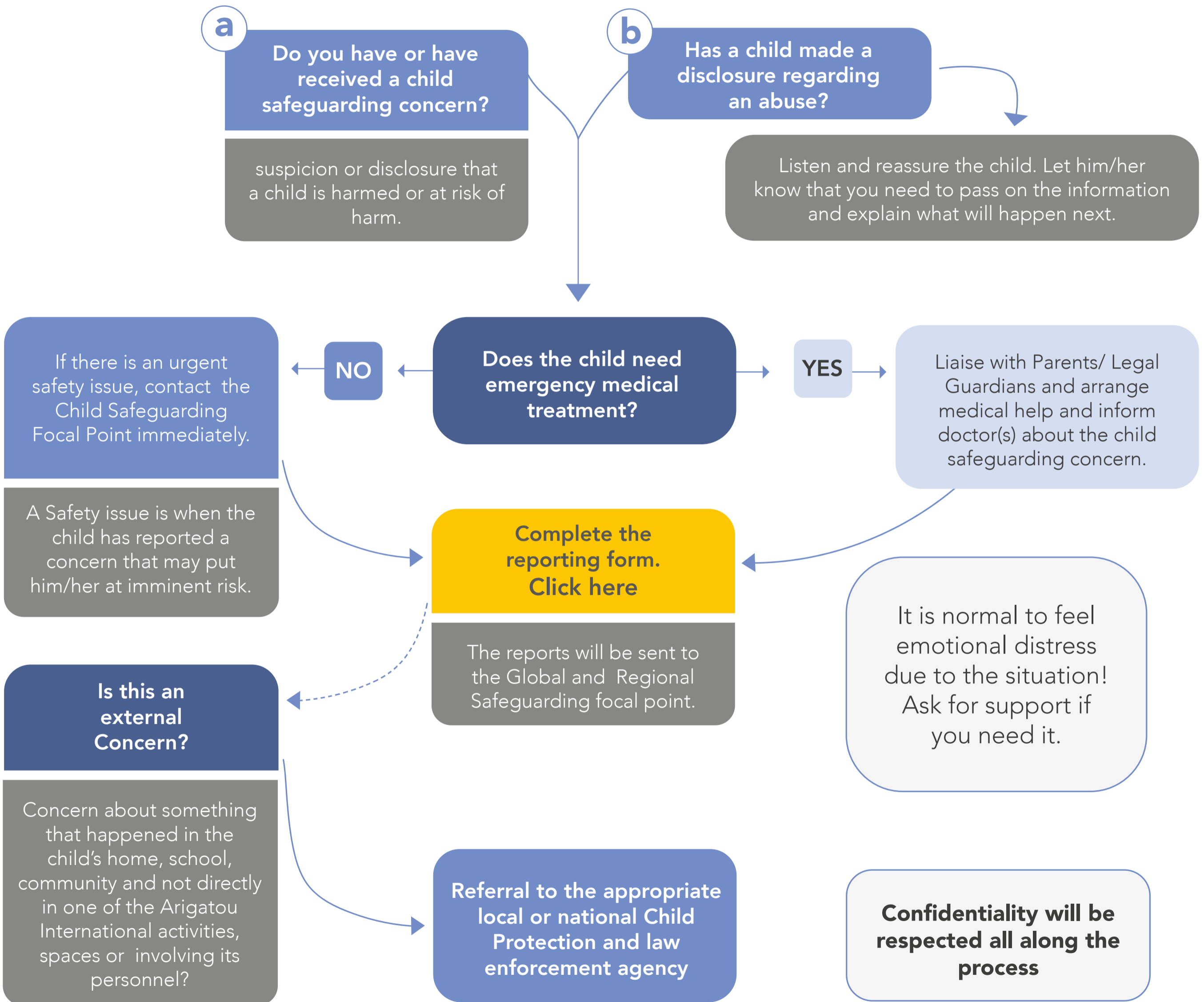
Inequality, exclusion, and discrimination will be challenged and will not be tolerated.

We maintain confidentiality and do not disclose the personal details of those reporting or raising concerns unless it is absolutely necessary to ensure that the child is protected.

Below you will find the steps to follow if you encounter a situation that puts a child's safety at risk as well as a form if you need to report a case.

STEPS TO TAKE FOR ADULTS REPORTING A CHILD SAFEGUARDING CONCERN

To be followed when you have a concern about child safeguarding



ARE YOU A CHILD* AND YOU WANT TO REPORT A SAFEGUARDING CONCERN?

IF YES, PLEASE FOLLOW THIS PROCESS:

*Below 18 years of age

Has something happened to you at home, in school, in your faith community, or neighborhood that made you feel unsafe, threatened, or that caused you actual harm? Was it in an activity or event organized by Arigatou International?



Tell us! We can help!

Here is what you can do:

An adult you trust can help report the case and will support to keep you safe



a

Talk to an adult you trust from Arigatou International

You can talk to the GNRC country coordinator or the Child Safeguarding Focal Point, or any other adult from Arigatou International you trust to help you report the concern to the Child Safeguarding Focal Point



b

Report what happened by using our online form. [Click here](#)



WHAT HAPPENS NEXT?

AFTER REPORTING A CHILD SAFEGUARDING CONCERN

The concern will be handled by the child safeguarding focal point. A confidential report will be made in compliance with Arigatou International Child Safeguarding Policy to the management who will take the necessary measures.

The outcomes can be:

The concern is likely to qualify as a criminal matter

The concern is only a violation of our Child Safeguarding Policy

Referral to appropriated Child Protection – law enforcement

Breach of code of conduct resulting in Disciplinary procedures performance management or termination of employment /contract /relationship

Victims safety needs assessed and responded to

Feedback will be given when possible to those directly involved or affected, ensuring confidentiality and privacy. Debriefing and counselling will be offered if needed.

Follow up on actions taken

Archive case

